

## FRONT YARD CURBING

The HOA Board of Directors has approved a recommendation from both the Architectural and the Landscape Committees to allow front yard concrete curbing. This curbing is specific to the landscaped area surrounding front yard palm trees.

The curbing is both decorative and functional as it enhances the properties aesthetic value, keeps mulch in place and prevents lawn mowers from hitting foliage.

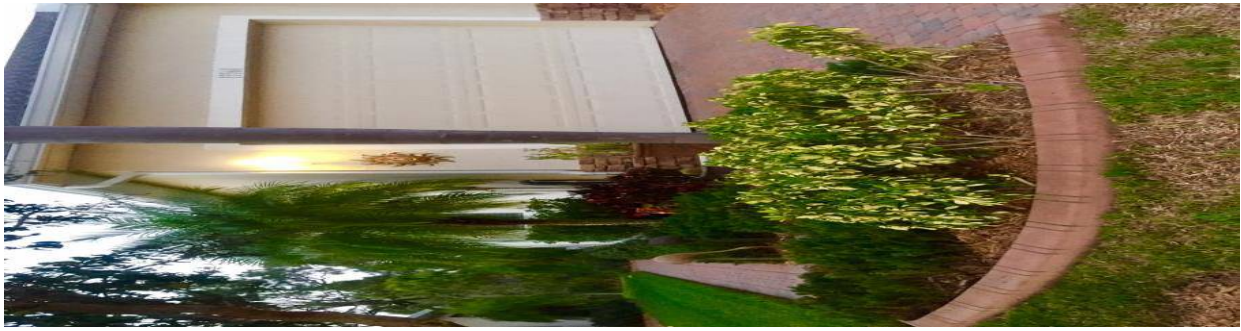
This is totally optional for the homeowner but if interested you can see what it looks like at 13566 Abercrombie Drive.

Association/Landscaper are not responsible for any damages caused by landscaper.

Because this is seen from the street, the HOA is going to be very strict about following the guidelines set forth.

1. An Architectural Request Form must be completed, submitted and approved before installing the curbing. These forms are available at our web site ([www.stillwater3.com](http://www.stillwater3.com)) and the clubhouse.
2. The HOA and the Landscape General Maintenance Company are not liable for any damage to the curbing. It is the homeowner's responsibility to make any repairs needed in timely manner.
3. The following requirements **must** be followed:  
Company: CURB EFFECTS ([www.curb-effects.com](http://www.curb-effects.com) or 941.485.4646)  
Color: AUTUMN BROWN  
Pattern: DOUBLE SPANISH





dated: February 2017